
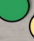



EXPERIENCE NORTHERN ONTARIO'S 'BEST KEPT SECRET'

VOYAGEUR  COUNTRY
presents

LEGEND

-  PRIVATE BUSINESS
-  PUBLIC USE
-  PERMIT REQUIRED



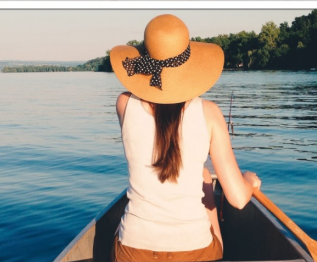
VOYAGEUR  COUNTRY

VOYAGEUR COUNTRY OFFERS AN OUTDOOR EXPERIENCE FOR EVERYONE



START PLANNING YOUR VOYAGEUR COUNTRY EXPERIENCE TODAY!

Along the shores of the Ottawa and Mattawa Rivers and in the shadow of the mighty Laurentian Mountains is Voyageur Country. Historically, a meeting place by the First Nations People and The Voyageurs on long portages from east to west and north to south, the region continues to bring people together at Canada's crossroads, on the shoulder of the Trans Canada Highway #17 and the shores of the Mattawa and Ottawa Rivers.



BONFIELD CALVIN PAPINEAU-CAMERON MATTAWA MATTAWAN



a Trail Map of
WHERE TO



OUTDOOR ACTIVITIES FOR EVERY SEASON TO ENJOY WITH THE FAMILY

An initiative of:  MBEDC Mattawa - Bonfield Economic Development Corporation

Rich History & Small Town Charm

REPRODUCTION OF THIS PUBLICATION IS ENCOURAGED

Véloroute Voyageur Cycling Route
Through Voyageur Country Region

705.472.8480
info@discoveryroutes.ca



**CYCLING ROUTE SPANNING
OVER 630 KMS ACROSS
ONTARIO**

discoveryroutes.ca/vcr

Kaibuskong Park
365 Highway 531, Bonfield

705.776.2644



**PUBLIC BEACH, REST AREA,
SKATEBOARD PARK &
OUTDOOR ICE SKATING**

bonfieldtownship.com
/tourism-recreation/parks

Eau Claire Gorge Conservation Area
Graham Rd, Calvin

nbmca@nbmca.ca



**HIKING & HISTORICAL SITE/
NATURE VIEWING**

nbmca.ca

VMUTS Multi-Use Trail System
Mattawan, ON

info@vmuts.com



**NON
MOTORIZED** **MOTORIZED**

**ATV, UTV, 4X4, DIRT BIKING,
HIKING &
MOUNTAIN BIKING TRAILS**

vmuts.ca

Mike Rodden Arena & Community Centre
450 Hurdman St, Mattawa

705.744.2311
info@mattawa.ca



**PUBLIC ICE SKATING &
COMMUNITY EVENTS**

mattawa.ca/recreation

Mattawa Splash Pad
250 Timmins St, Mattawa

705.744.5611



**SPLASH PAD
FOR THE FAMILY**

mattawa.ca

OFSC Trails

Across Voyageur Country

Bonfield - bonfieldsc.vianet.ca
Mattawa - mattawasc.ca



**300 KM OF GROOMED
SNOWMOBILE TRAILS LINKED
WITH OFSC TRAILS ACROSS
ONTARIO**

ofsc.on.ca

Bonfield Event Park

357 Development Rd, Bonfield

705.487.3663
info@thebafm.com



**FLEA MARKET, DRAG RACES &
COMMUNITY EVENTS**

thebafm.com/bonfield-event-park

Calvin Community Centre

1355 Peddlers Drive, Calvin

705.744.2700
administration@calvintownship.ca



**PUBLIC SKATING &
COMMUNITY EVENTS**

calvintownship.ca

Nature's Harmony Ecodge

574 Snake Creek Rd, Mattawan

705.223.4340
rest@naturesharmony.ca



**SNOWSHOEING, TUBING, CROSS
COUNTRY SKIING, SWIMMING,
HIKING & BIKING**

naturesharmony.ca

Mattawa ATV Wilderness Tours

510 Brydges St, Mattawa

705.218.3333
mattawaatwildernesstours@gmail.com



**ATV/UTV
TOURS & RENTALS**

mattawaatwildernesstours.ca

Mattawa Golf & Ski Resort

2314 Hwy 17, Papineau-Cameron

705.744.5818
mike@golfmattawa.com



**CHALLENGING
9 HOLE GOLF COURSE
CONNECTS TO OFSC TRAILS**

www.golfmattawa.com

Pyramid Paintball

86 Hwy 17, Bonfield

705.477.8882
play@pyramidpaintball.com



PAINTBALL ADVENTURES

pyramidpaintball.ca

Algonquin North Wilderness Outfitters

16 Hwy 630, Calvin

705.744.3265
canoe@algonquinnorth.com



**CANOING & KAYAKING
TOURS & RENTALS**

algonquinnorth.com

Canadian Ecology Center

6905 Hwy 17, Calvin

705.744.1715
info@canadianecology.ca



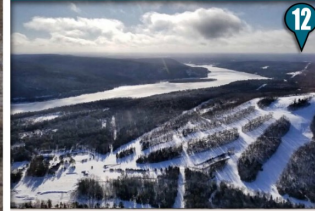
**SNOWSHOEING, DARK SKY
VIEWING, SPECIAL EVENTS**

canadianecology.ca

Antoine Mountain

ON-656 N, Mattawan

705.744.4754
hello@antoinemountain.ca



**DOWNHILL SKIING &
SNOWBOARDING**

antoinemountain.ca

Mattawa Marina

285 First St, Mattawa

705.744.1475



**BOAT LAUNCH @
MATTAWA TOWN DOCKS**

mattawa.ca

Brent Crater Trail - Algonquin Park

Papineau-Cameron

nbmca@nbmca.ca



**HIKING & NATURE/METEORITE
CRATER VIEWING**

nbmca.ca